

Hawk Enterprises of Elkhart, Inc

The Air Mover - Model BH001 - 3S



Specifications:

- 1/2 HP, 120 V AC, 60Hz, 3 speed ball bearing (BB) motor
- 4.5, 5.0 & 6.25 Amps.,
- 25 Amp, 1.25 hp rated switch
- 25 ft. (7.62 m), 16-3 SJT, black power cord with molded-on plug
- fan wheel - 11in. (46.2 cm) od, 10.75 in (27.3 cm) Plastic, .50 in (1.27 cm) bore hub
- rated 2000, 2500, & 2950 CFM air flow
- height: 18.2 in. (46.2 cm)
- width: 14.5 in. (36.8 cm)
- length: 19.5 in. (49.7 cm)
- weight: 29 lbs. (16.7 kg)

Features:

- 3 speed AC ball bearing (BB) motor
- Metal carrying handle
- Top mounted cord wrap
- Heavy duty 3-speed switch
- Durable heavy duty roto-molded polyethylene housing
- Heavy duty power cord with molded-on plug
- Rubber feet for non-slip positioning
- Plastic guards on inlet and metal guards on outlet for maximum safety
- Stackable with locating lugs
- 3 position air stream - parallel, 45°, and 90° to floor
- Compact design with exceptional performance
- UL/CUL Approved



ASSEMBLED IN USA

HAWK ENTERPRISES OF ELKHART, INC

52744 Park Six Court
Elkhart, Indiana 46514 USA
Phone:(574) 294-1910
Toll Free: (888)289-4295
Fax: (574) 970-0289

SAFETY INSTRUCTIONS

READ AND SAVE ALL INSTRUCTIONS.
READ BEFORE USING!

When using an electrical appliance, basic precautions should always be followed, including the following:



WARNING

- Failure to follow these safety instructions could result in damage to the machine, damage to property, or bodily injury.
- To reduce the risk of electric shock, do not expose to water or rain.
- Do not use machine while placed in standing water.
- To reduce the risk of fire or electric shock, do not use this fan with any solid-state speed control device.
- Use machine only as described in this manual. Do not use in ways it was not intended.
- Turn off all switches and unplug the electrical cord when not in use and before servicing.
- Do not allow to be used by untrained personnel. Close attention is necessary when used near children.
- Use only on GFCI protected receptacles.
- If the machine is not working as it should, has been dropped, damaged, or left outdoors, return it to a service center before using.
- Avoid electrical shock; do not handle the plug or machine with wet hands. To unplug the cord, grasp the plug. Do not pull on the cord.
- Do not use an extension cord with this fan. Do not use on outlets with a damaged cord or plug. Connect the machine only to a properly grounded outlet (refer to GROUNDING INSTRUCTIONS). Avoid damaging cord (closing doors on cord, pulling around sharp edges or corners, hot surfaces, or running machine over cord).
- This machine creates suction and contains a revolving fan. Keep hair, loose clothing, fingers, and all other parts of the body away from openings and moving parts. Do not insert an object into any of the openings in the machine.
- Do not use in areas where flammable and/or explosive vapor or dust is present to avoid the possibility of fire or explosion. Some cleaning fluids can produce such vapors.
- Do not allow air inlet openings on either side of the machine to be obstructed; this could cause the motor to overheat.
- Do not allow debris near front air exhaust opening which could be thrown by the air stream.

GROUNDING INSTRUCTIONS

BEFORE YOU PLUG IN YOUR MACHINE:

Check the rating plate to see if the voltage agrees within 10% of the voltage available. This machine must be grounded. If it should malfunction or break down, grounding provides a path of least resistance for electric current to reduce the risk of electric shock. This machine is equipped with a cord having an equipment grounding conductor and grounding plug. The plug must be plugged into an appropriate GFCI outlet that is properly installed and grounded in accordance with all local codes and ordinances.



DANGER

Improper connection of an equipment grounding conductor can result in risk of electric shock. Check with a qualified electrician or service person if you are in doubt as to whether the outlet is properly grounded. Do not modify the plug provided with the appliance. If it will not fit the outlet, have a proper DANGER outlet installed by a qualified electrician (Figure 1).

USE ONLY ON GFCI PROTECTED RECEPTACLES.



UNPACKING AND SETUP

Carefully inspect all components to insure that there is no concealed freight damage. If such damage is discovered, file a Damage Report immediately with the delivering carrier.

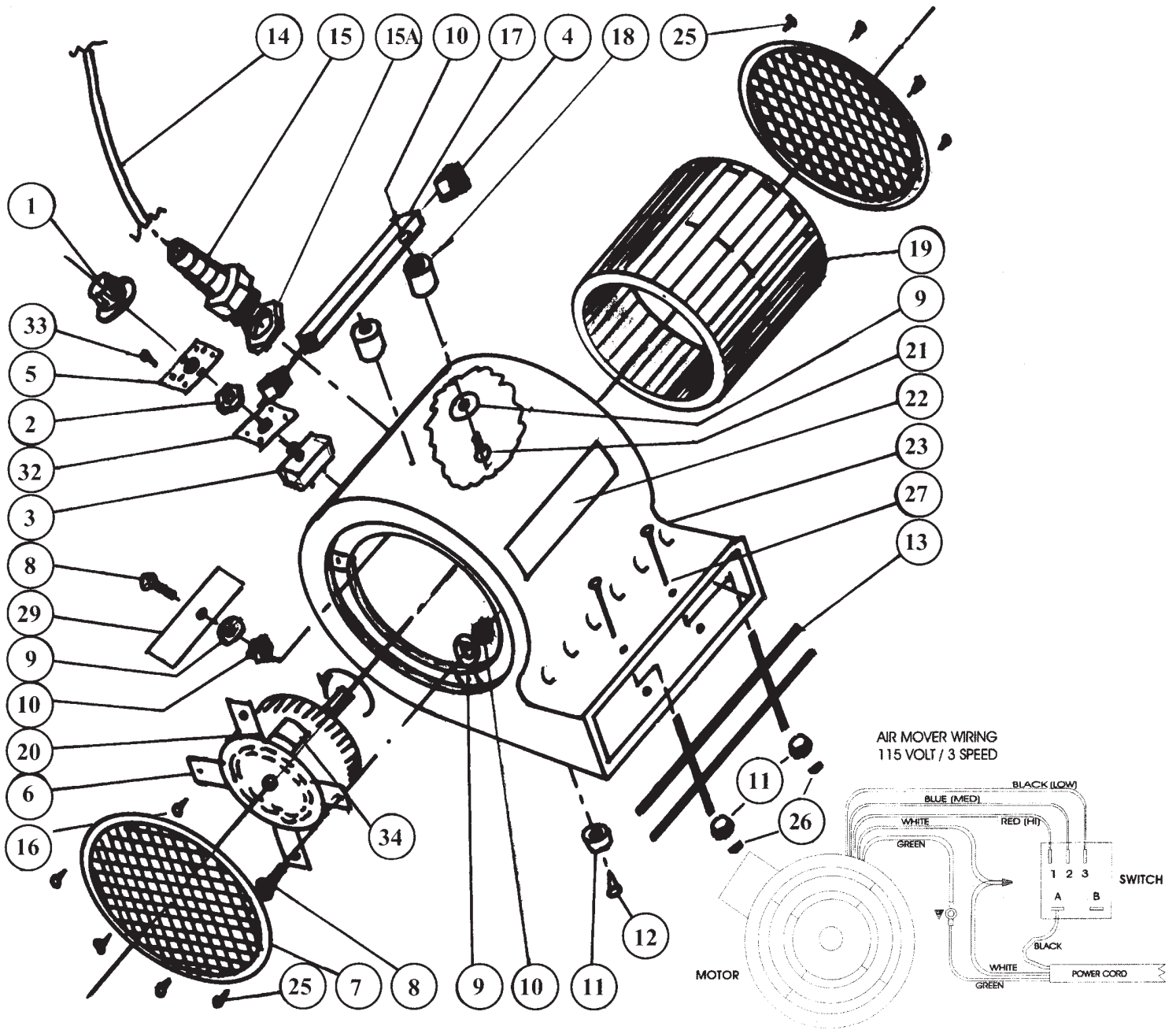
OPERATION

Place and position machine. To direct airstream as desired, this unit can be positioned flat on floor, at a 45 degree angle upward, or 90 degrees upward. Plug power cord into a properly grounded outlet and turn power switch to selected speed.

CLEAN UP AND STORAGE

For compact storage, this machine can be stacked with another. Wind the extension cord in a circle on the blower carrying handle. Be sure not to wind the cord tighter than necessary.

Store the machine in a cool dry place. Avoid prolonged exposure of machine to freezing temperatures during storage.



Det. No.	Part No.	Description	Qty. per unit
1	E0052A	Knob - Switch	1
2	H0046-1	Nut - 3/8 - 24 Hex.	1
3	E0052	Switch - Rotary, 4 pos., 25 a, 1.25 HP	1
4	H0086	Plug - Square, Handle, Black	2
5	L0018A	Label, Switch	1
6	B0015-1	Motor, 1/2 HP, 3-speed, 230 vac	1
7	S0033P	Grill - Air Intake, 12 in.	2
8	H0084	Screw, 1/4 - 20 x 3/4 Rd. Hd. Phil.	4
9	H0085	Washer, 1/4 ID x 1.25 OD, Fender	4
10	H0079-1	Nut, 1/4 - 20, Flex Lock	4
11	H0087	Foot, Rubber - 3/4 in. dia.	7
12	H0002	Screw	7
13	S0031P	Grill, Exhaust	1
14	E0031-2	Power Cord, 16-3 SJT x 25 ft.	1
15	H0021-2	Strain Relief - Power Cord	1
15A	H0022	Conduit Nut 1/2"	1

Det. No.	Part No.	Description	Qty. per unit
16	H0084-1	1/4 - 20 x 3/4 Round Head Bolt	2
17	S0030P	Handle Bar - 13.5 x 1.0 x 1.0 Black	1
18	M0004	Spacer, 5/16 x 1.0 x 1.18, Black	2
19	B0001	Blower Wheel, 11.0 x 10.75 L	1
20	S0037P	Motor Brace	1
21	H0056-4	Bolt, 1/4 - 20 x 2.0, Hex Head	2
22	L0018	Label - Air Mover	1
23	C0025	Housing, Blower, Black, Poly	1
25	H0059-	1 Screw, Plastic - 10 -16 x 5/8	8
26	H0097	Nut, 10 - 24	2
27	H0088	Screw, 10 - 24 x 5.0 Rd. Hd.	2
29	C0025-1	Retainer, Wire	1
32	S0034	Plate, Switch Mounting	1
33	H0059	Screw, Sheet Metal, #8	4
34	E0053	Cap., Mtr., 7.5 ufd, 370 v.	1

LIMITED WARRANTY

Your HAWK equipment which has been manufactured, tested and inspected in accordance with carefully specified engineering requirements, is warranted to be free from defects in material and workmanship. This Limited Warranty is, however, subject to the Following qualifications, conditions and limitations which are set forth to provide you and all users of the HAWK equipment with information concerning the duration, extent, availability, and applicability of this HAWK Limited Warranty, the procedure to be taken to obtain its performance, and other information concerning the **HAWK Limited Warranty policy**.

The HAWK ENTERPRISES Limited Warranty is extended to the original end user as follows:

Airmover: 1 year parts replacement and 6 months service labor warranty.

Replacement parts guaranteed for 90 days from date of installation against defects in material and workmanship.

This Limited Warranty will not cover damage attributable to the following:

- (1) Improper, unreasonable or negligent use or abuse of the equipment
- (2) Abrasions or punctures of the equipment.

The start date of the Limited Warranty coverage shall be the purchase date of the original end user or six months from the date the machine was shipped from the Factory, whichever comes first.

PARTS OF EQUIPMENT NOT COVERED BY THE LIMITED WARRANTY

Certain parts of equipment require replacement in the ordinary use due to normal wear by reason of their characteristics. Normal wear items such as cords, switches, bumpers, bearings, etc. are excluded from the Limited Warranty.

EXCEPTIONS AND EXCLUSIONS FROM THE LIMITED WARRANTY

This equipment is required to be used on electric current as indicated on the data plate. Otherwise damage, defects, malfunctions or other failure of the equipment arising from use on electric current not as indicated are excepted and excluded from this Limited Warranty. Defects, malfunctions, failure or damage of the equipment caused by improper, unreasonable or neglect use or abuse while in possession of the purchaser are likewise excluded from this warranty. If repair is done on your equipment by anyone other than those designated as authorized to perform such work without first having obtained factory instructions, HAWK ENTERPRISES at its sole option, may determine that this warranty will not apply and that reimbursement for such repair will not be made because of the failure to comply with such factory specified instructions.

PROCEDURE TO BE TAKEN TO OBTAIN PERFORMANCE OF LIMITED WARRANTY REPAIR

To secure repair of the equipment or any warranted parts under this Limited Warranty, the following procedure should be taken. The inoperative equipment or warranted parts, together with satisfactory evidence of the purchase date, must be delivered, with shipping and delivery charges prepaid, to one of the following:

- (1) The dealer from whom purchased;
- (2) Any HAWK distributor's service department in the United States;
- (3) Any HAWK authorized service station in the United States.

If you are unable to locate any of the foregoing, you may write or otherwise communicate with HAWK ENTERPRISES before repair service is performed by anyone else. In such event, HAWK ENTERPRISES will provide either the location or a closely available HAWK distributor service department, or HAWK authorized service station or other factory instructions. Upon compliance with the above procedure, all warranted defects will be repaired, at no additional charge or costs to the customer, and the repaired product returned to the customer, with all shipping and delivery charges pre-paid. In following the procedures set forth, PLEASE MAKE CERTAIN to state the model, type and serial number as shown on the data plate of the equipment.

REPLACEMENT

In the event of a defect, malfunction or failure of your HAWK equipment or any warranted part to conform with this warranty, HAWK may, at its sole option and own expense, replace the equipment or any warranted part with another new, identical or reasonably equivalent model or part in lieu of repairing the defect.

NO REFUND OF PURCHASE PRICE

HAWK will not, as a matter of its Limited Warranty policy, refund the customer's purchase price.

LIMITED WARRANTY REGISTRATION CARD FOR YOUR EQUIPMENT AND REQUEST FOR INFORMATION

Your HAWK distributor from whom you purchased your equipment is responsible for the registration of your Limited Warranty with the factory. Any information or questions you may have concerning your HAWK ENTERPRISES equipment or this Limited Warranty may likewise be secured from the factory. This Limited Warranty will give you specific legal rights, and you may also have other rights which vary from state to state.