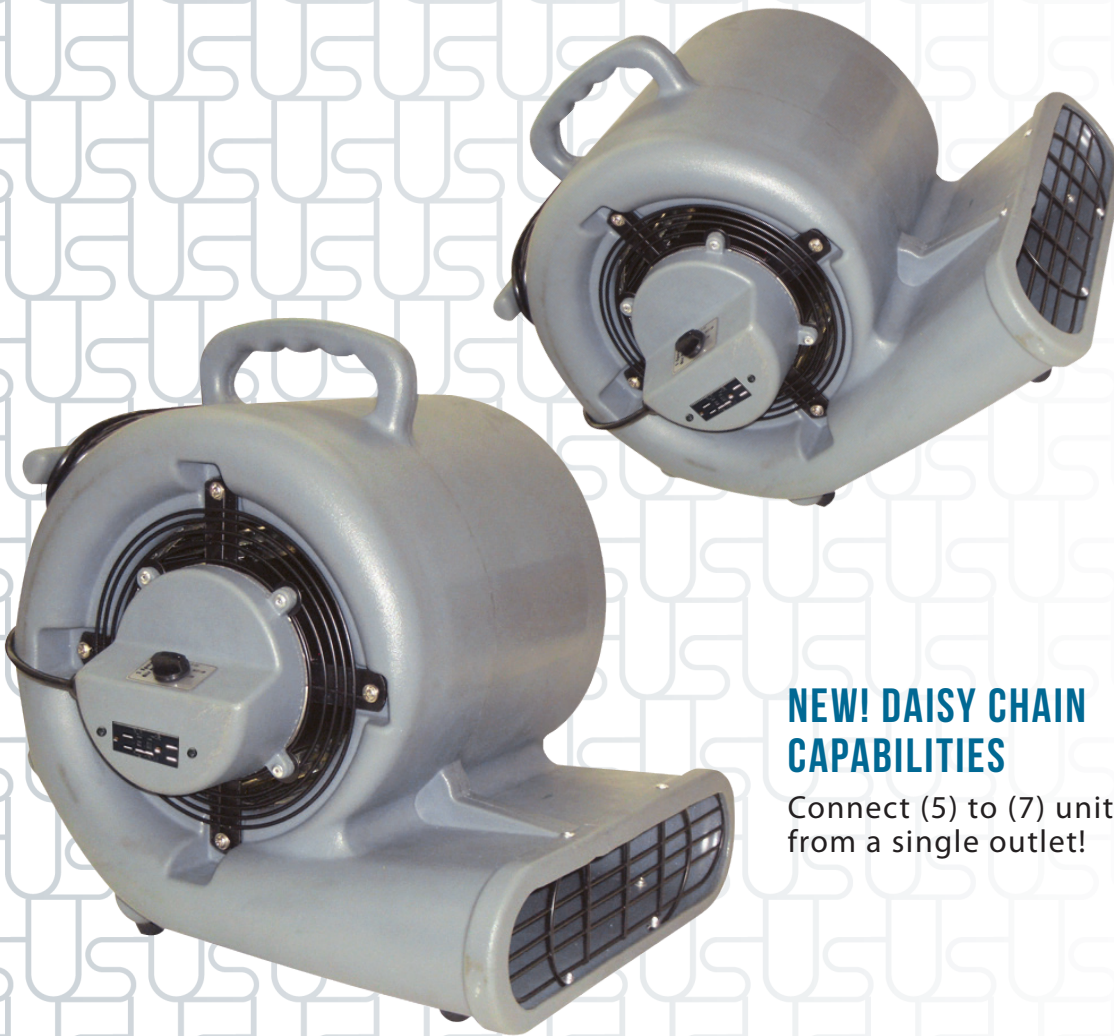


Private Label  
Branding  
Available!

# DISCOVER THE BENEFITS OF THE CORSAIR AIR MOVER

Powerful high airflow dries carpets,  
floors, walls and ceilings!



## NEW! DAISY CHAIN CAPABILITIES

Connect (5) to (7) units  
from a single outlet!

**CORSAIR AIR MOVER**  
3-Speed: 780 RPM, 950 RPM, 1100 RPM



ULTIMATE SOLUTIONS  
Together We're Better!

**CALL US TODAY IF YOU HAVE ANY QUESTIONS,  
OR WOULD LIKE TO PLACE AN ORDER!**

Ultimate Solutions | Mercury Floor Machines  
15571 Container Lane, Huntington Beach, CA 92649

Phone: 888-568-4606 | Fax: 201-568-7962

[www.us-group.com](http://www.us-group.com) | [www.mercuryfloormachines.com](http://www.mercuryfloormachines.com)

Another Innovative  
Product from:



## SEE THE BENEFITS

### of the Corsair 3-Speed Air Mover

**Warranty:** 10-year warranty on body, 1-year on motor and all electrical components.

- The 1/2 HP, 3-speed motor gives ample power for drying surfaces and moving musty air.
- Includes a 9.5" wide, steel fan blade and frame with a 14" chassis opening.
- Air intake and outlet screens keep airflow free from debris and protect fingers from the powerful steel fan blades.
- Designed to operate in three positions and tilts at both 45- and 90-degree angles. Aim the air stream at the floor to move air and dry carpets or tip back to dry curtains, walls and ceilings.
- GFCI and daisy chain capabilities! Connect (5) units on a 15 Amp circuit on high speed. Connect (7) units on a 20 Amp circuit at low speed.
- Stack up to three air mover units for easier storage.
- Balanced design with molded carrying handle and cord wrap make transportation easy.
- Roto-molded polyethylene body withstands the toughest working environments and resist dents, chips and cracks. It's easy to clean and always looks professional.
- Includes (1) 20-foot, 16/3-gauge safety power cord.

## APPLICATIONS

- Ideal for drying carpets, furniture and paint, flood clean-up, moving musty air and more!

## SPECIFICATIONS

**Model:** 90-2000

**Motor:** 1/2 HP, 115 V

**3-Speed Fan:** 780 RPM | 950 RPM | 1100 RPM

**Air Flow Rates:** 1060 CFM | 1360 CFM | 1500 CFM

**Amps:** 2.2 Amps Low, 2.4 Amps Medium, 2.7 Amps High

**Body:** Molded, High-Density Polyethylene

**Fan Size:** 9.5" Steel Blade and Frame

**Safety:** ETL Tested to UL/CSA Standards

**Power Cord:** (1) 20-Foot, 16/3-Gauge Safety Power Cord

**Weight:** 31 lbs.

**Dimensions:** 19.2" L x 14.5" W x 19.5" H

## DISCOVER THE POWER OF HAVING OPTIONS

Compare us to the competition – discover the difference!



① Aim Flat

### Stack up to 3 units for compact storage!

Handle fits conveniently into the bottom of the air mover to stack three units easily and safely.



② Aim at 45°

### Operate at 3 different fan speeds!

**Low** - 780 RPM at 1060 CFM

**Med** - 950 RPM at 1360 CFM

**High** - 1100 RPM at 1500 CFM

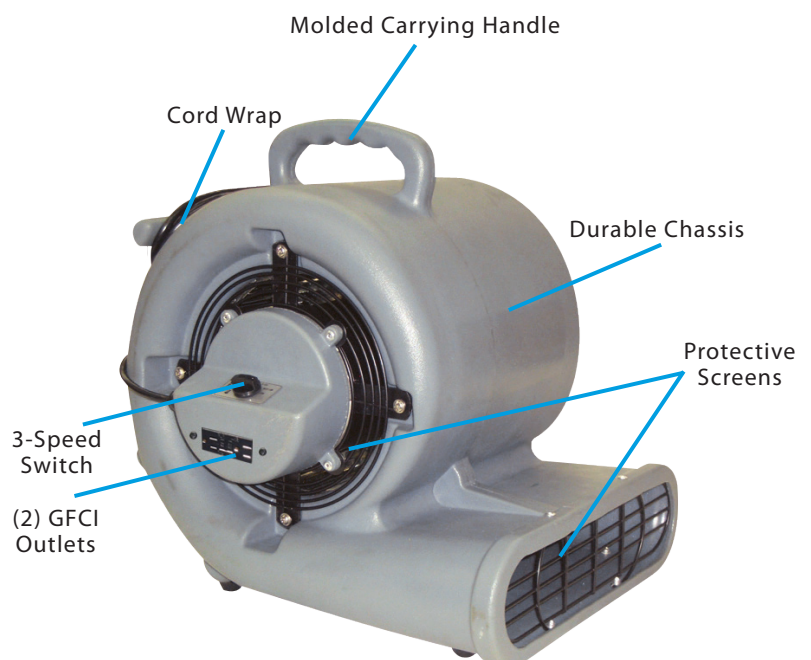


③ Aim at 90°

### Designed to operate at 3 angles!

Aim at the floor or tip back to move air and dry carpets, floors, furniture, curtains, walls and ceilings!

## FEATURES



**NEW Daisy Chain Capabilities!**